



COMPREHENSIVE EDUCATIONAL ASSESSMENT

INITIAL CONSULTATION (FREE)

A phone consultation with a psychologist to discuss your concerns and needs to decide how we can best support you.

INTERVIEW WITH PARENTS

A 2 hour interview with one or both parents/caregivers to gather a history of the child.
Teacher forms sent out.

CHILD INTERVIEW + COGNITIVE ASSESSMENT

A 2 hour block is allocated for an interview between the psychologist and client, and a cognitive assessment to occur.

ACADEMIC ACHIEVEMENT ASSESSMENT

A 2 hour block is allocated for an academic achievement assessment to occur.

Covers Reading, Writing, Oral Language & Mathematics

FEEDBACK SESSION

A 1 hour block to discuss the results, supports and next steps for the client.

SCHOOL FEEDBACK (FREE)

A 30-minute Telehealth/phone call with the client's school to discuss the supports and next steps for the client.

00

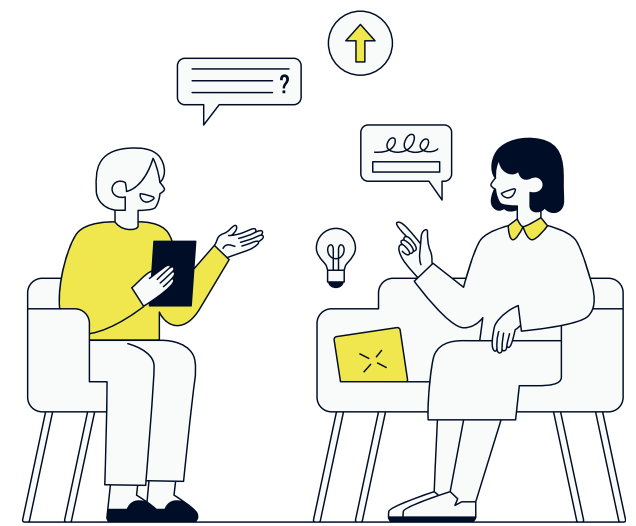
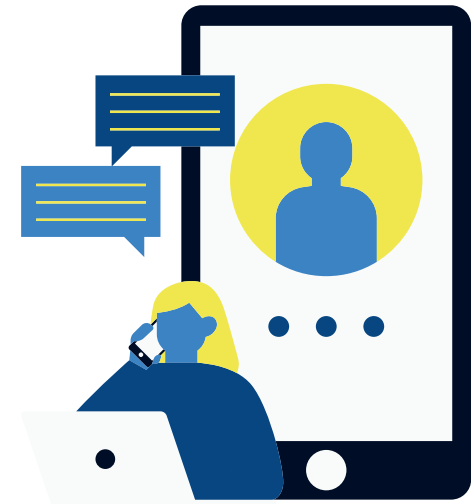
01

02

03

04

05



Cost: \$2400

WWW.NOSTOSPSYCHOLOGYCLINIC.COM.AU